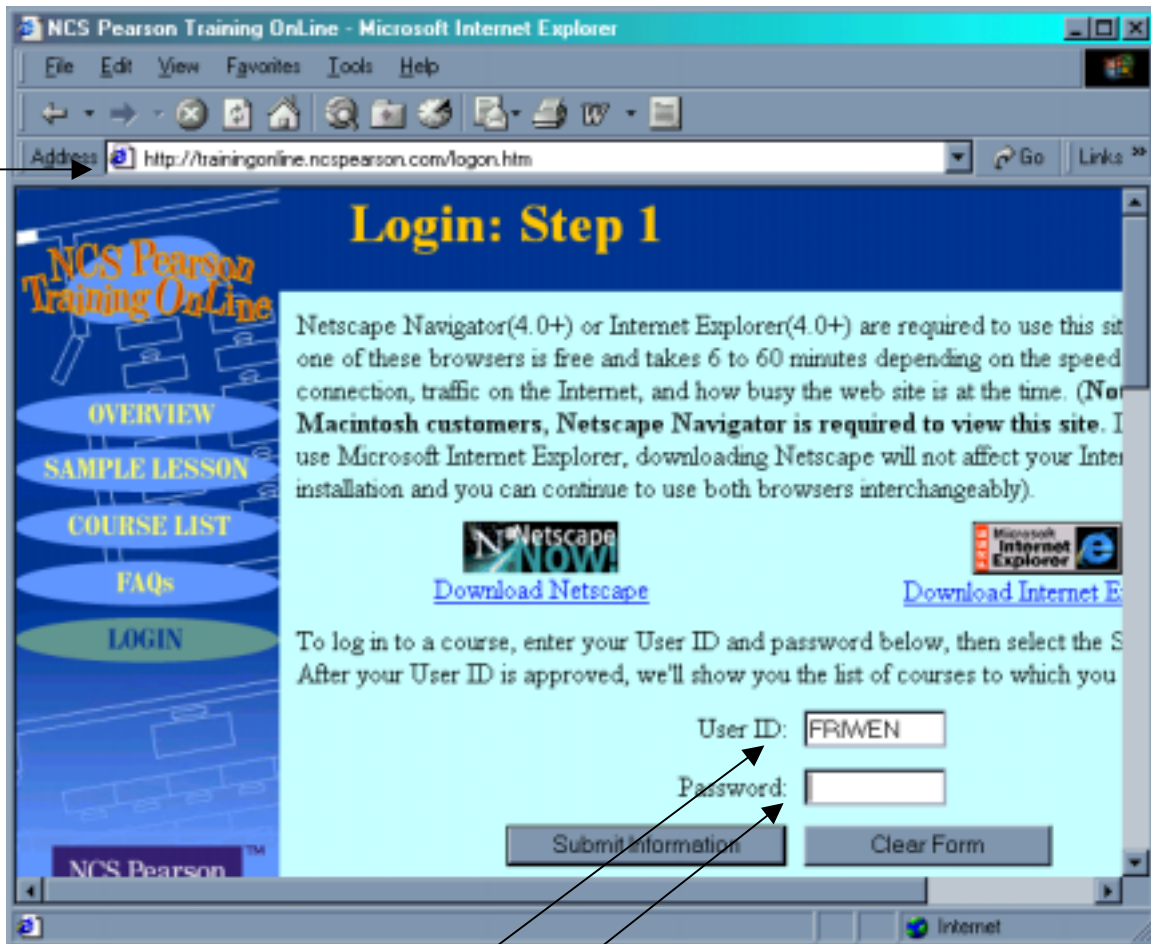


On-line InteGrade Pro Tutorial

There is also an on-line InteGrade Pro training tutorial.

1. Go to <http://trainingonline.ncspearson.com/logon.htm>



2. Type in the:
3. User Id = FRIWEN
4. Password = YINCOS
5. Click on Submit Information.
6. Click "I agree"
7. Click on Course4: InteGrade Pro
8. Chances are you will need to install the Authorware Web Player for the tutorial to run. Click on the GET Authorware Web Player button. (you may need to download the web player differently from school, at home just click on the button)
9. Then click Install Now.
10. You may need to click yes to a security warning.
11. When the video plays installation is complete.
12. Close the Macromedia web page window.

13. On the NCS Pearson training web page, pull down the **View** menu and select **refresh**.
14. Wait a minute and the training course will load and then appear.
15. On my computer I had to say Yes to another security message.
16. NCS Pearson will now take over your screen.
17. Read the Caution screen and click **Continue**.
18. You will need to set-up your own training account. You should make-up your own user name and password and WRITE IT DOWN HERE:  
User ID: \_\_\_\_\_ type it in and press **enter**  
Password: \_\_\_\_\_ type it in and press **enter**  
Fill in you name.  
Fill in the school ID: 1033360
19. Click on **Login**.
20. Click on **Teacher**.
21. Click on **I do receive cl files from my administrator**.
22. Click **continue**
23. Follow the instructions to preview the tutorial.
24. Go to the Library and find the resource books.
25. When instructed, click on the Magazine rack and select the **Menu Bar & Toolbar**.
26. When you are done with that tutorial click on the magazine rack again and select **Class Viewers**.
27. When you are done with that tutorial click on the magazine rack again and select **System Setup / Preferences**.
28. Click on the **Main** button.
29. Notice the different rooms in this tutorial show you different lessons. As you are working with the program in the future this is one reference tool available to you.