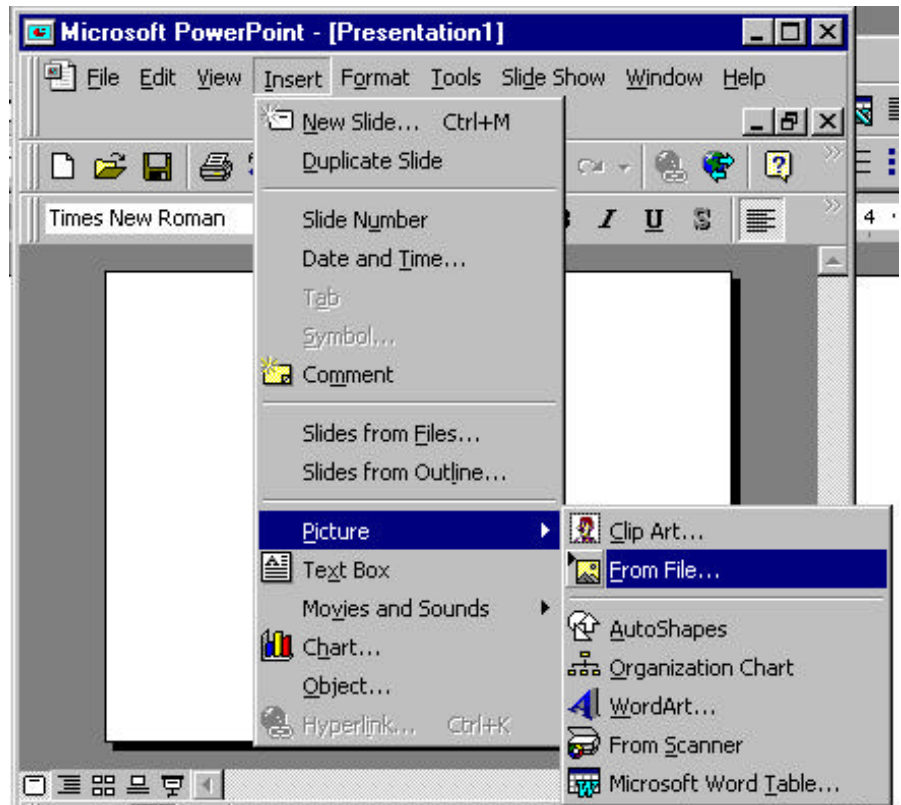
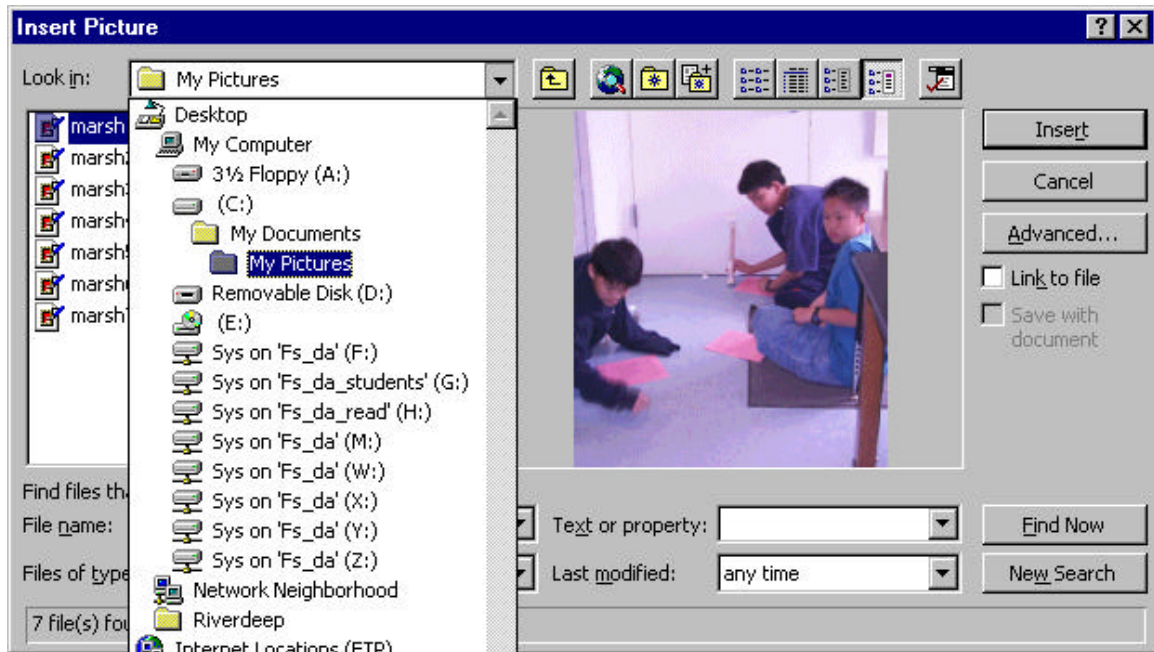


## To Insert a digital photograph

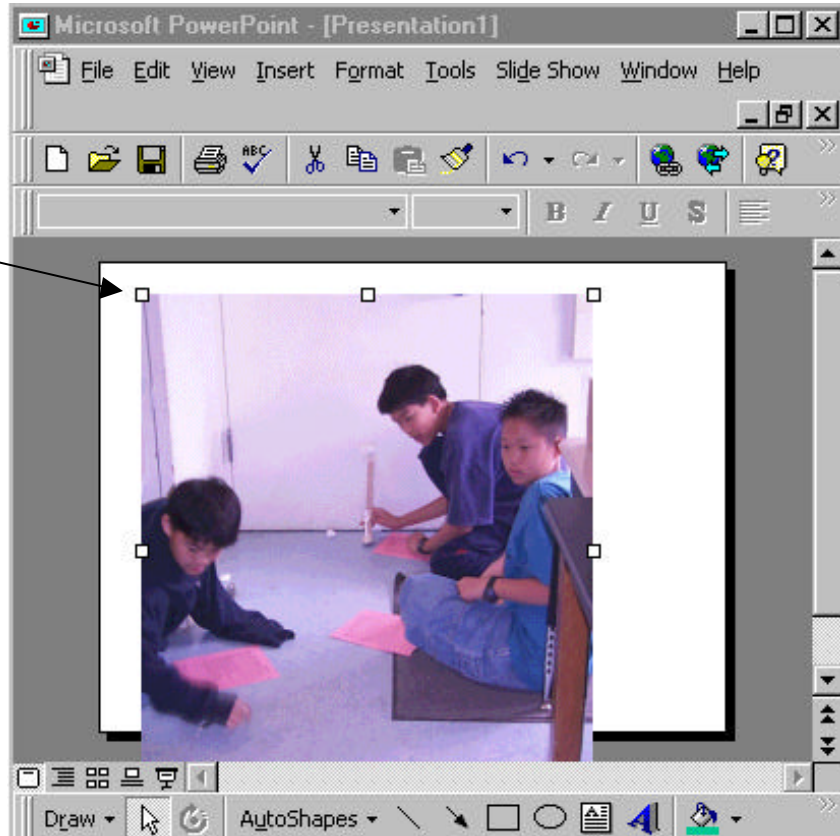
1. Pull down the **Insert** menu.
2. Select **Picture**.
3. Select **From File**.



4. Navigate to where you filed your photos. In the previous lesson we put them on the C: drive in **My Picture**.



4. Pick the photo you want. Click on **Insert**.
5. You may need to resize your photo. You can do this by grabbing the handle in the corner of the photo.

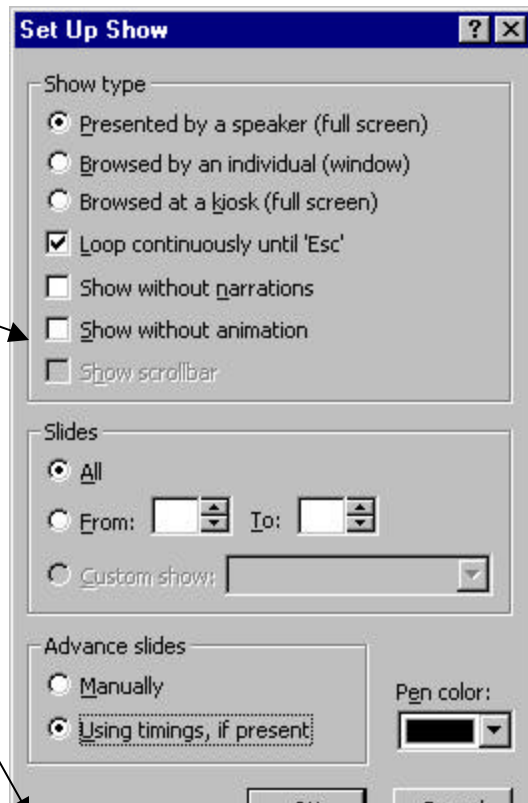


6. Insert a new slide. Pull down the **Insert** menu.
7. Select **New Slide**.
8. Select the layout you want.
9. Repeat the above process until all your photos are on their own slide.

Adjust your slide show settings.

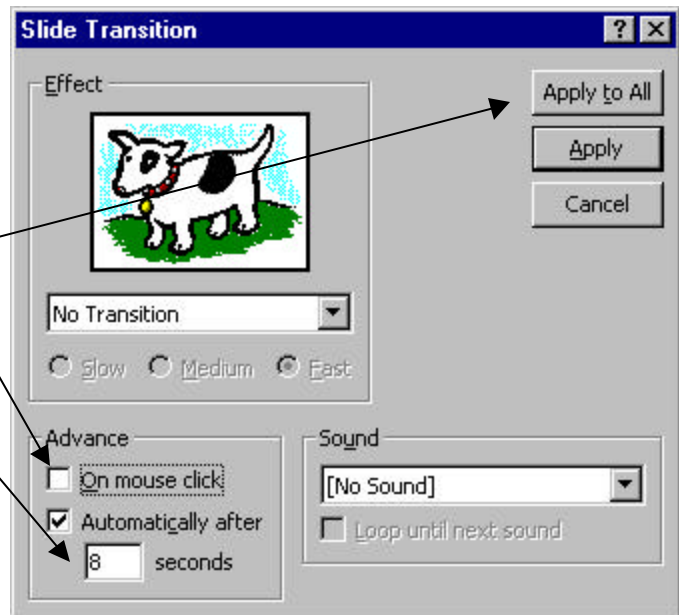
I like to put it on auto run for Open House.

1. Pull down the **Slide Show** menu.
2. Select **Set Up Show**.
3. Select **Loop Continuously**.
4. Select **Using timings**.



Now we need to adjust the timing.

1. Pull down the **Slide Show**.
2. Select **Slide Transition**.
3. Un-check **On mouse click**.
4. Check **Automatically after 8 seconds**. Type in 8.
5. Click on **Apply to All**.



THAT'S IT. Run your slideshow.