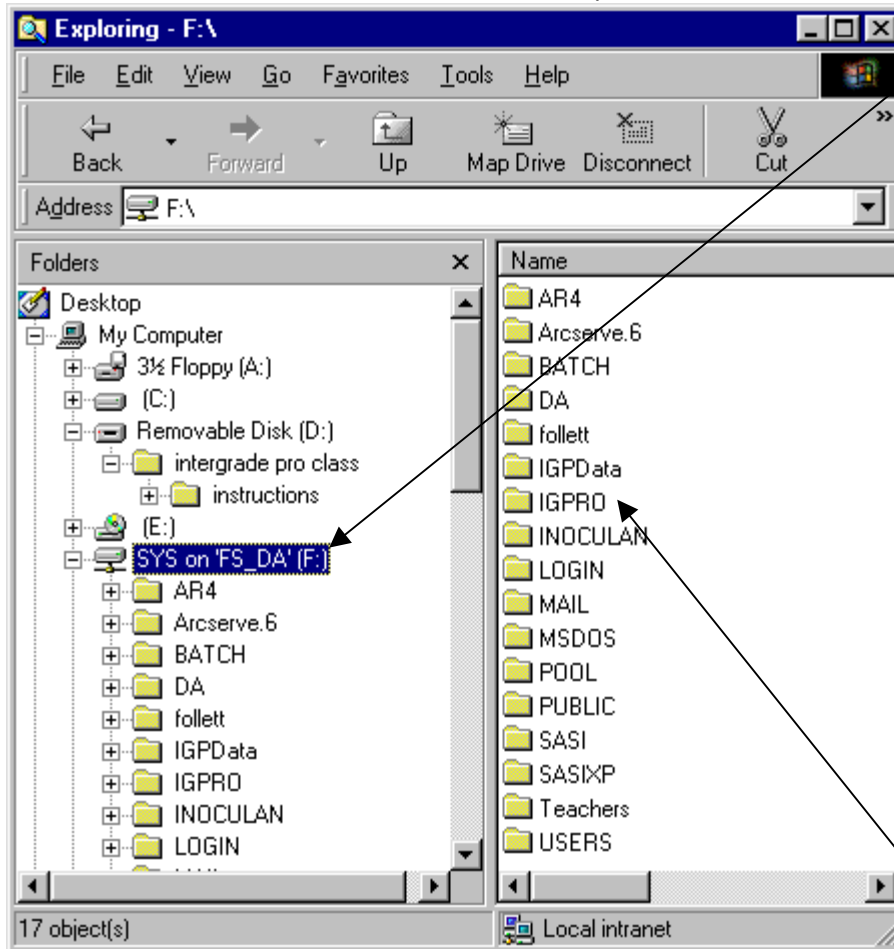


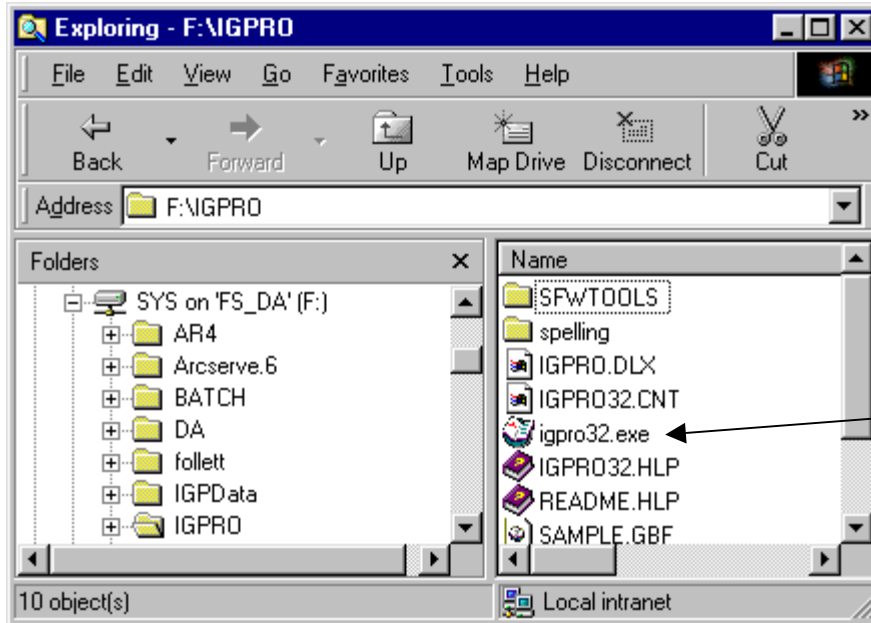
InteGrade Pro School Installation Instructions

We are not really installing, but rather running the program off the server.
Using Windows Explorer we will navigate to the server and make a short cut to the InteGradePro program.

1. Right click on the Start menu.
2. Select Explore (This is the same as going to the start menu and selecting Windows Explorer).
3. Double click on SYS on 'FS_DA'(:F) to open this drive.



4. Double click on IGPRO.



5. Find igpro32. Or it may look like igpro32.exe
6. Click on it once and drag it over to your desktop.
7. You just made a short cut. A short cut is an icon on your desktop that will open a program for you.